



Tiffany & Co. - Security Doors and Sidewall Cladding

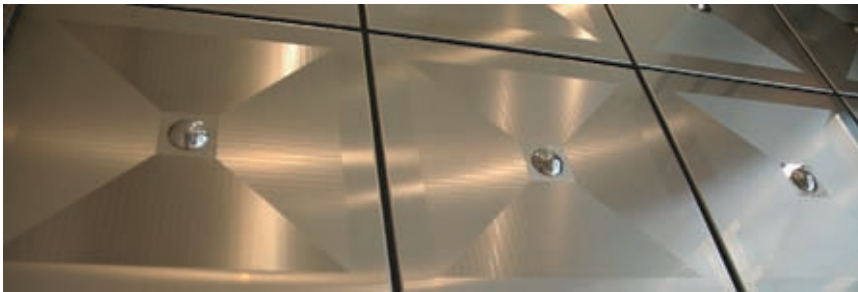
Location Toronto, Ontario
Designer / Architect Page and Steele Architects
Duration Jun 1994 - Dec 1994

Scope - Soheil Mosun Limited was contracted to manufacture and install stainless steel security entrance doors and sidewall cladding for this high profile client.

Highlights - The stainless steel security doors are etched with a brushed finish and accented with rosettes.



Entrance with security doors open



Etched and brushed stainless steel wall cladding accented with rosettes



Entrance showing pocket door in hidden position



Entrance with security doors closed



Sidewall cladding