

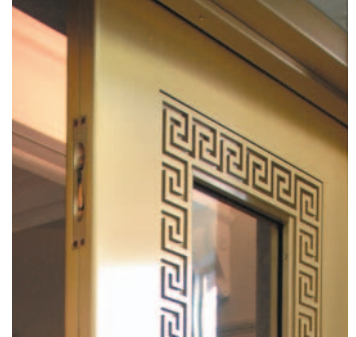


## Dominion Public Building - Custom Bronze Doors

Location Toronto, Ontario  
Designer / Architect Alex S. K. Chiu Architect  
Duration Jun 2003 - Mar 2004

Scope - Soheil Mosun Limited was contracted to fabricate and install one pair of custom steel-framed, bronze-clad doors, with glass panels surrounded by 1/4" thick bronze waterjet cut motif.

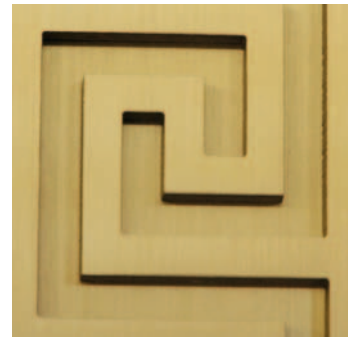
Highlights - The goal of the restoration architect was to replace the existing doors, which were modern and not in keeping with the rest of the building, with doors that reflected the style and heritage of the building. An exceptional example of custom bronze doors that utilize some of SML's most advanced manufacturing techniques.



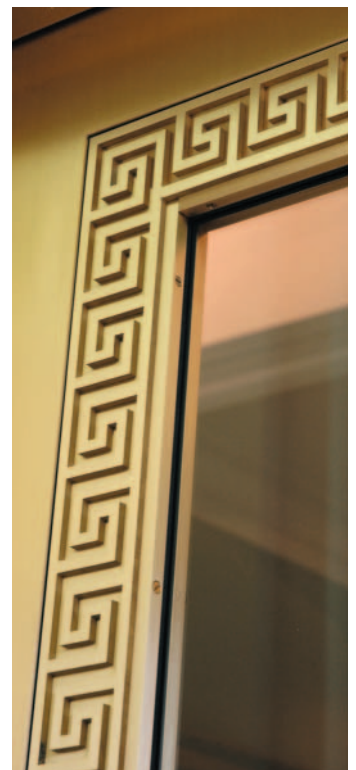
*Quality cladding and installation*



*Steel-framed, bronze-clad doors with glass panels*



*Waterjet cut 1/4" thick bronze motif*



*Professionally installed glazing*