



Harry Rosen Inc. - Exterior Display Case

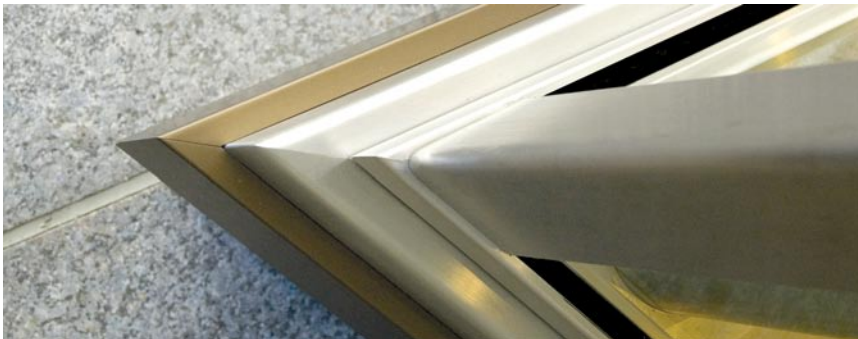
Location Toronto, Ontario
Designer/Architect B.L.T Design Build Contractors
Duration Jun 2006 - Jun 2008

Scope - Soheil Mosun Limited was contracted to fabricate and install (1) metal and glass structure, an exterior display case for the Harry Rosen menswear store located in First Canadian Place.

Highlights - The Exterior Display Case features formed, anodized aluminum band signage and stainless steel corner guards, posts and ceiling panels. Glass walls are 1/2" thick with stainless steel shoes, locking mechanisms and hinges. Glass floor is frosted and tempered and serves to diffuse the light source from below. Ceiling is stainless steel paneling that features directional inset lighting that can be configured to suit the display.



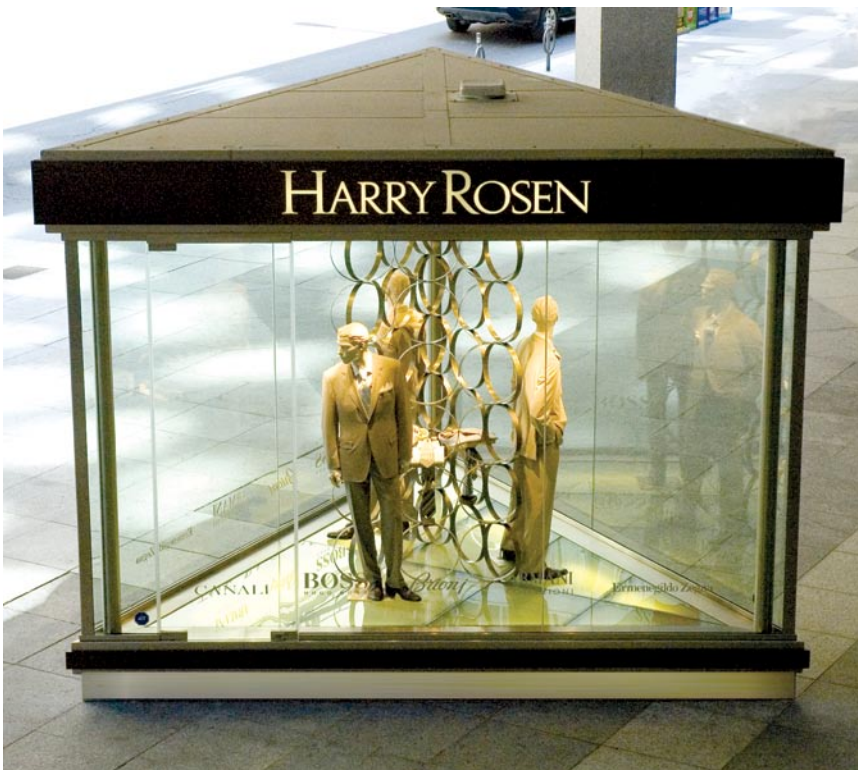
Custom, unique, exterior display case



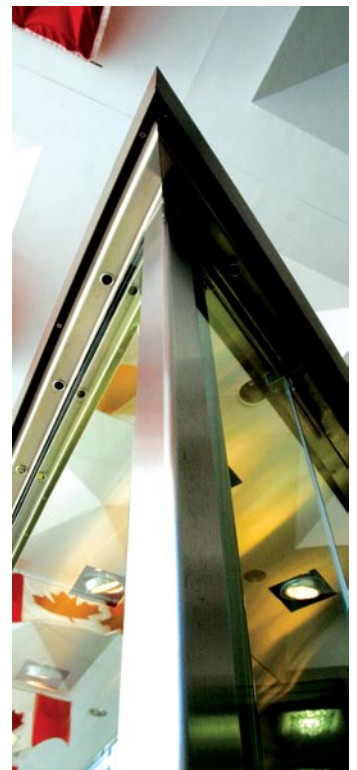
Banded, anodized aluminum cladding on stainless steel



Precision fabrication using different metals



The exterior display case, installed at First Canadian Place



Clean, elegant lines