



## 700 Sixth Street NW - Exterior Ornamental Metal

Location Washington, D.C  
Designer/Architect Hellmuth, Obata + Kassabaum Inc.  
Duration Feb 2008 - Mar 2009

Scope - Soheil Mosun Limited was contracted to fabricate stainless steel canopy cladding, (2) custom exterior light fixtures and custom painted aluminum grilles.

Highlights - Canopy cladding is acid etched, patterned stainless steel. The Chinese lantern style custom light fixtures are made with stainless steel and feature SML's (orbital) non-directional finish, with custom tempered glass inserts. Glass is coated with a ceramic frit to provide translucency to the glass. The inset grilles were fabricated from extruded aluminum and painted in a UV stable powder coat finish painted to design specifications. In January 2010, SML was selected the winner of the Washington Building Congress Craftsmanship Award® which recognizes SML's outstanding skill and achievement on its scope of work for the 700 Sixth Street NW project.



*Exterior air intake grilles*



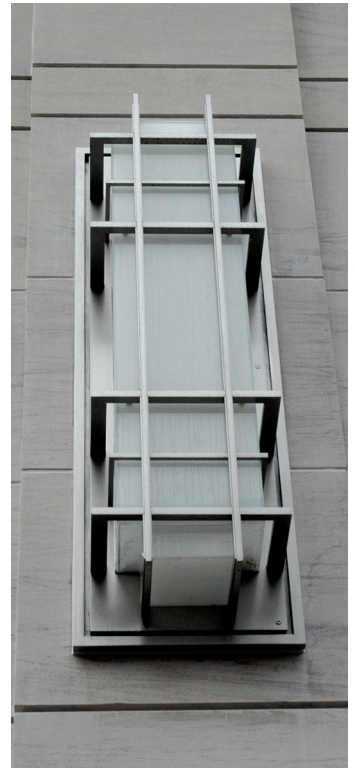
*Exterior stainless steel canopy cladding*



*Acid etched pattern detail*



*Stainless steel canopy cladding with etched pattern*



*Chinese lantern style exterior light grille*