

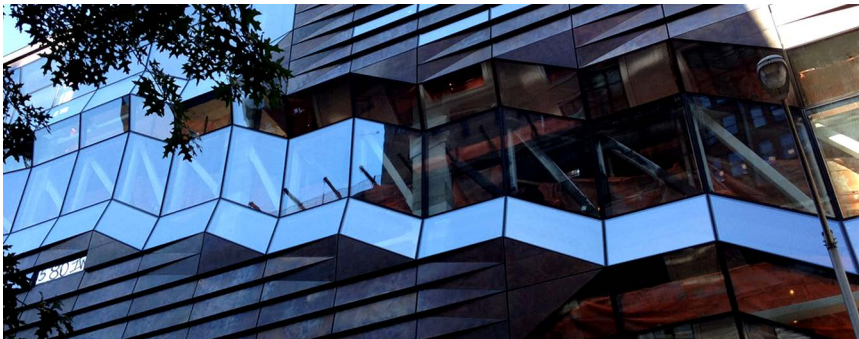


## The New School in NYC - Bronze Patinated Building Envelope

Location                    New York City , New York  
Designer/Architect      Skidmore, Owings & Merrill LLP  
Duration                    Feb 2011 - Jan 2013

Scope - Soheil Mosun Limited was contracted to patinate thousands (approx 7500) of muntz bronze panels which comprise the cladding of the (16) story building envelope at The New School, in New York City, located at 65-5th Ave.

Highlights - The New School muntz bronze panel finish exhibits the full range of muted tones of brown, red, blue and green with subtle, graduated and blended transitions between the colors. In conjunction with the buffed clear wax finish, the bronze panel surface appears more gaseous than solid, as if in a state of flux, and this creates a significant sense of depth of field or three-dimensionality. The panel finish is substantially reflective in bright direct light but appears less so in shadow, from a stationary viewpoint.



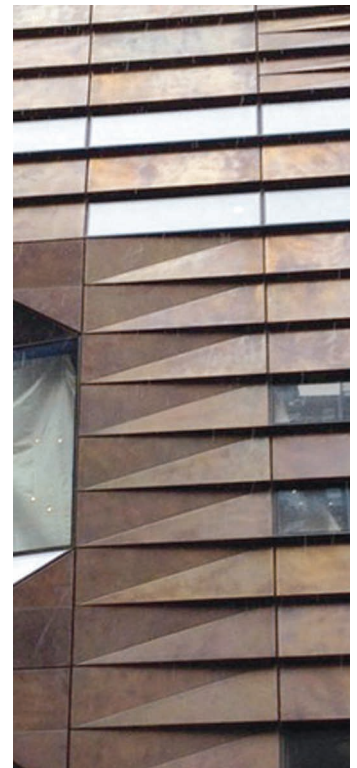
*The patinated muntz paneling where it meets and joins with the glazing on the building envelope*



*A look at the South side of The New School.*



*The New School at 65-5th Avenue with completed cladding of the building envelope*



*Detail of panel faceting and colour.*