

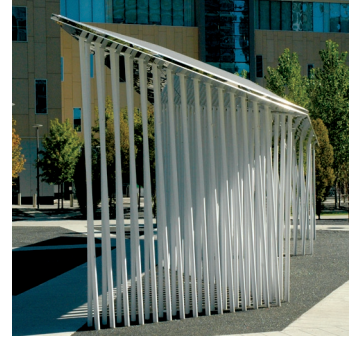


Sheridan College - The Scholars Green Pavilion

Location Mississauga, Ontario
Designer/Architect ALC LP
Duration Jun 2011 - Jun 2012

Scope - Soheil Mosun Limited was contracted to manufacture and install The Scholars Green pavilion in Mississauga, Ontario at the Sheridan College campus situated there. This is a site to host art exhibitions held by the college and this piece was commissioned as public art for this space.

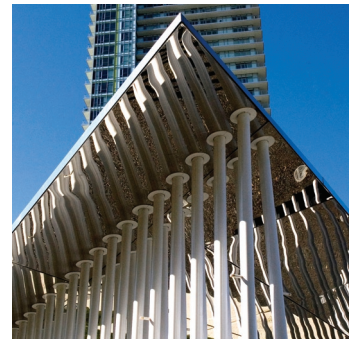
Highlights - This pavilion has a non-rectangular parallelogram shaped roof resting on four channeled braces. Its roof is a robotically welded and galvanized steel framework which is then clad with mirror polished stainless steel. The roof is supported with steel tubing that is powder coated with a titanium white gloss finish which sit within embedded channels in the concrete. There are 182 of these steel tubes in total. The footprint of the structure is 60' long on the north side, 45' long on the south, 15.5' on the east and 12.5' on the west. It stands at 14.5' at it's highest point.



The pavilion viewed from the side



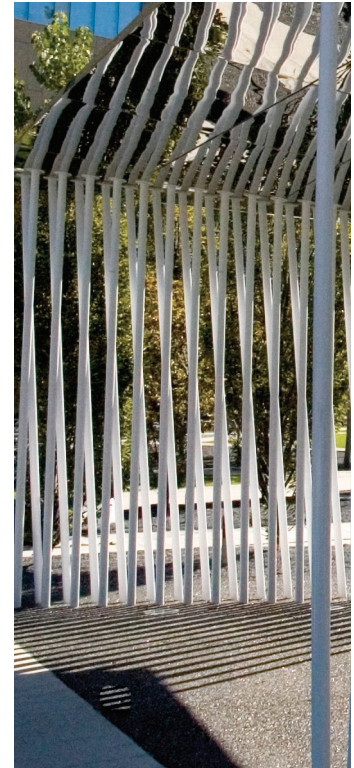
The pavilion as viewed from the rear, facing North



Detail of corner



The Scholars Green Pavilion at Sheridan College Mississauga campus.



Powder coated steel tubing